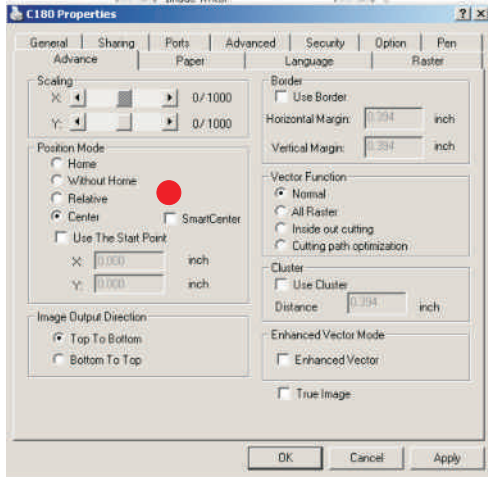


Utilizing Smart Position on C180



Smart Position is a standard feature on the C180 and can be used to protect your efforts against small positioning errors that can cost you big dollars in lost materials, order delays and lost production time

First Design your Job intended for Smart Center (2 or 4 point location Tool) and when sending the job, select Center and Highlight the Smart Position Switch found in the Advance Tab of the C180 print Driver ●



When you send the Job, you will see the standard Job name and settings displayed on the Control Panel as usual.

Select the Enter key ● and the system will display the secondary screen illustrated to the right.

When you select (enter when arrows are positioned at Smart Center) your laser will open the Smart Center screen.

Place your red diode at first point you wish to set and Save, move to 2nd point and save 3rd, then 4th point. At completion the laser will find the geometric center of the points that you confirmed.



Owners of the larger Laserpro systems will still find the SP displayed on the original Job Settings Screen for the time being. Please contact us for a Smart center Tech Document or find a video on the www.LaserProNA.com site for an illustration of this easy to use Power Tool.