



www.LaserProNA.com
LaserPro Dealers of North America

Installing a Print Driver on the C180 II, Mercury II or III, S290, Spirit Series EXE Print Driver on a *64 Bit OS* connected by the USB connection.

(Same instruction may also be used on all 32 Bit OS as well.)

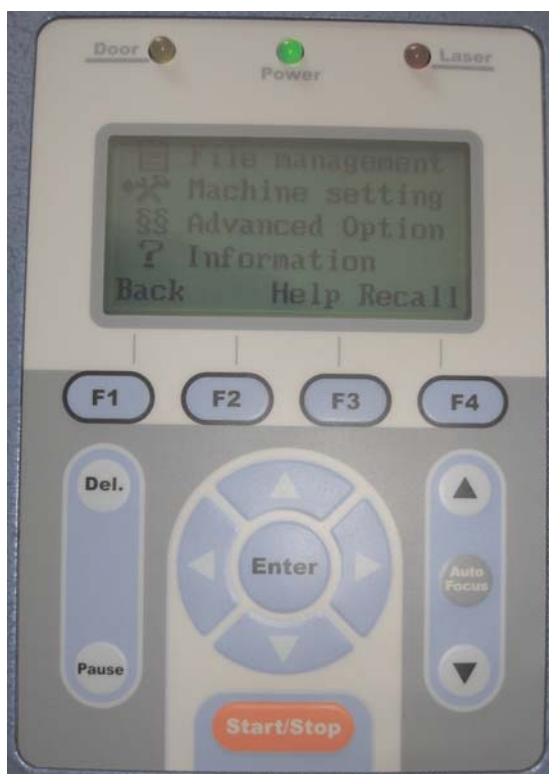


Do **NOT** install the GCC USBsetup program on a 64 BIT OS.

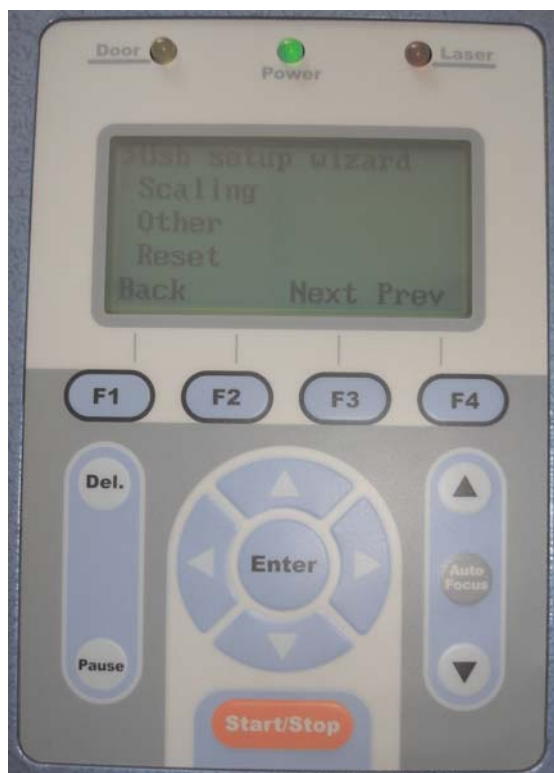
To connect a LaserPro listed on the cover page on a Windows PC via the USB Port follow the steps below. With the USB cable **connected** turn on the Laser.



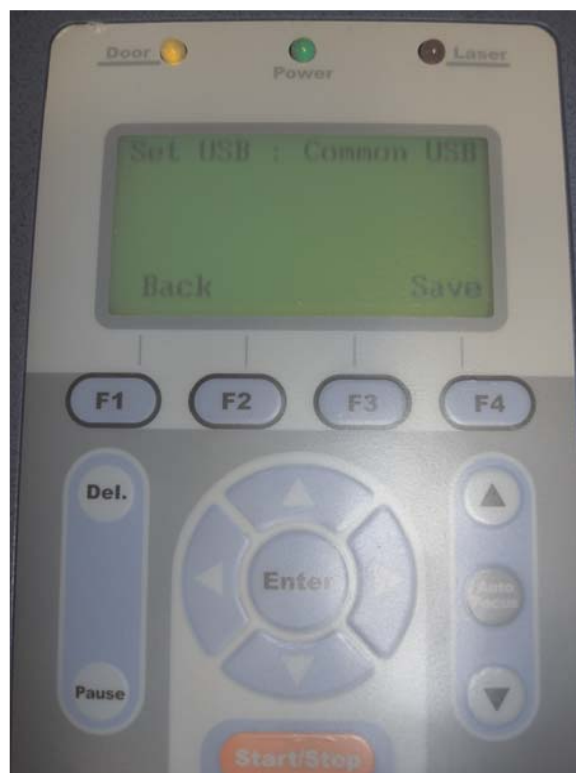
Press **F4** to enter **Function Menu**



Press **Down Arrow** to **Machine settings** and press **Enter**.

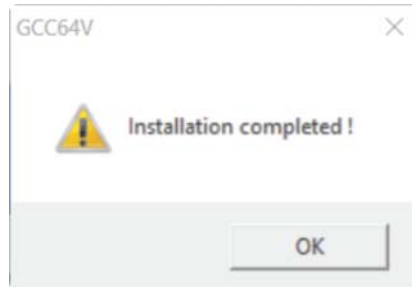
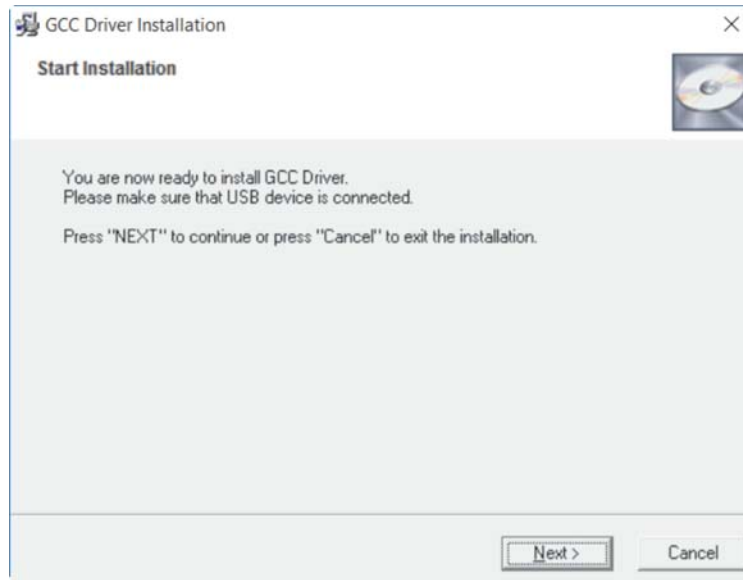


Press **Up Arrow** until you reach **USB Setup Wizard** and press **Enter**.



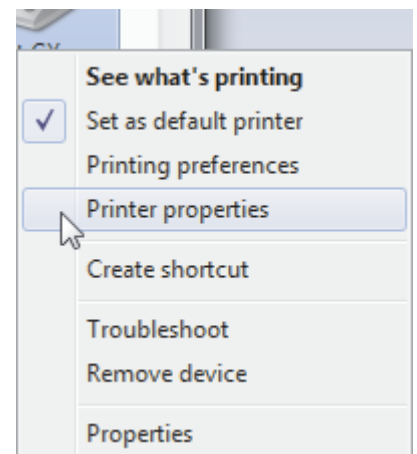
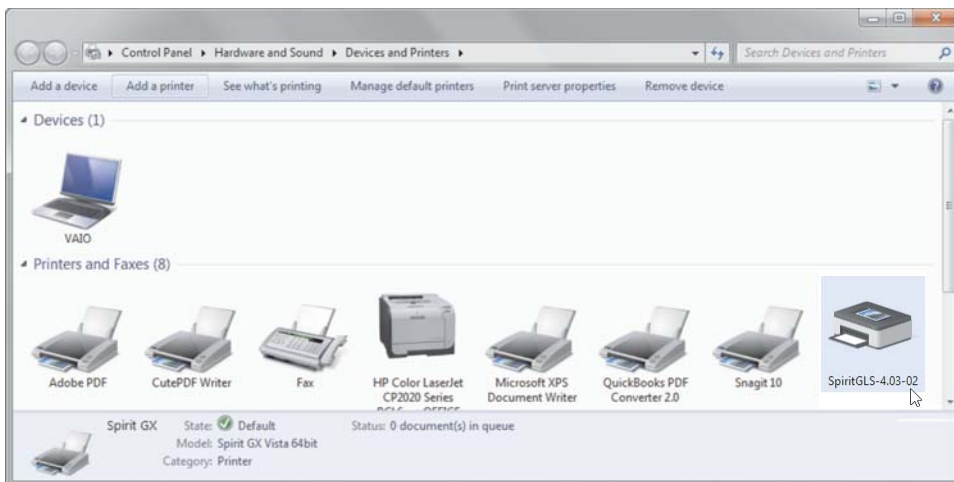
The Default setting is Common. If GCC USB press the **Right Arrow** to change to Common and **F4** Save. (Old firmware will say Vista)

Navigate to the file location where you unzipped the LaserPro EXE Print Driver.
Double Click the EXE file. The screen below will appear.



Once the EXE has run and completed the Driver installation, click **OK**.
Navigate to Devices and Printers, or go to Printers in Control Panel depending on the version of Windows.

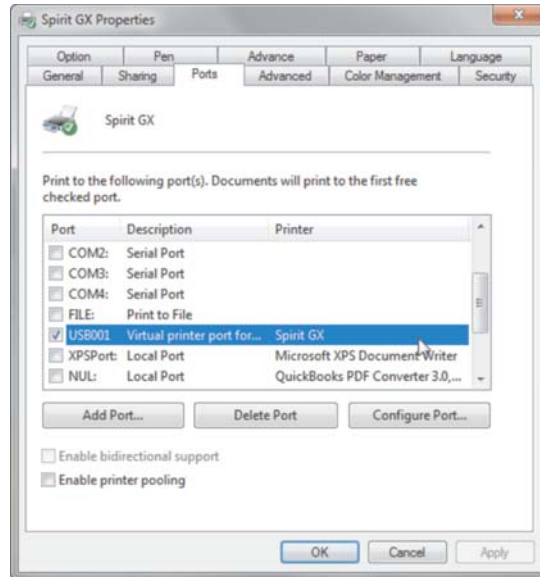
Step 1



Open up **Device and Printers**, **Right click** on the icon for the LaserPro Laser, in this case the **Spirit GLS**.

Left Click on **Printer Properties**

Your LaserPro, when connected via the USB cable, operates within Windows under a Virtual Printer Port location.



Click on the **Port** Tab.

If there is more than one **USB Virtual printer port** in the list choose the first unassigned **USB Virtual printer port**.

In this example **USB001**. Press **OK**.

Back in the Printer Screen, the simplest way to confirm correct Port selection, is to unplug the USB Cable from either end. If configured correctly the LaserPro Printer Icon will go Gray (off line), and Black (on line) when plugged back in.

If no reaction go back to step 1 on page 3.

Select the next **USB000X Virtual Printer Port**, and repeat until unplugging the cable has the correct effect.

Whatever physical port is used, needs to always be used. You may wish to color code port(s) and cable(s). Changing to a different physical USB Port on your PC will cause Windows to assign a new Virtual Printer Port address and the Drive's Port Address will have to be reconfigured.

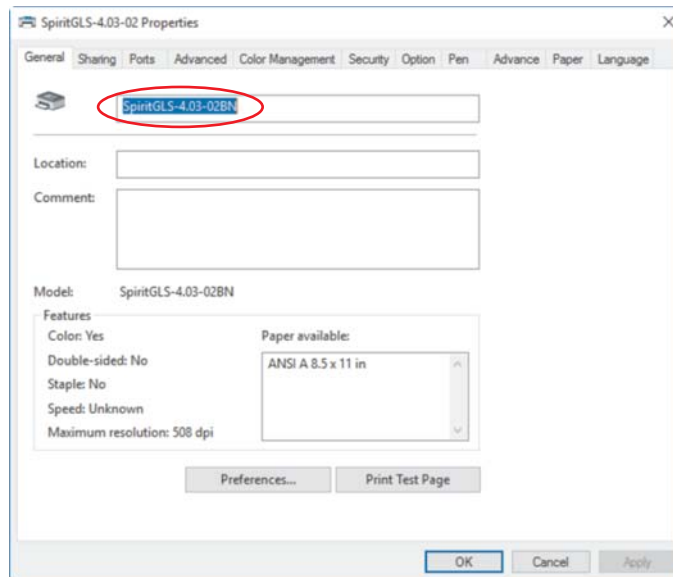
If you are going to have more than one LaserPro machine of the **same model**, connected to the same PC, follow these instructions below prior to installing the print driver an additional time, or times depending on how many machines of the same model, that are connected to same PC, using the same driver.

Right Click on the LaserPro Driver Icon (see screen captures bottom page 3) and select **Printer properties** as before.

In the **General** tab rename the Driver to anything you want, such as Spirit GLS #1.

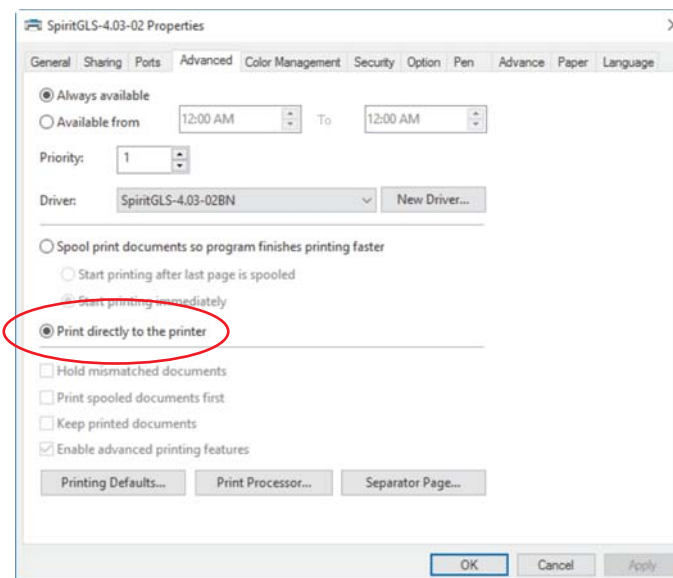
See screen capture on top of page 5.

Now go to page 2 and repeat.



If your going to print from any application other then CorelDRAW, go back to **Printer properties** and choose the **Advanced** tab, not the **Advance** tab. (the one ending in **d** is the one you want) See Below screen capture.

Select the option in the middle **“Print directly to the printer”**
Click on **OK** and you are good to go.



*If you are upgrading from a 32 bit computer to a 64 bit computer and your **laser is made prior to 2013**. You **must** check you to see if you need to upgrade your Main Board Bios prior to moving to a 64 bit OS. On your laser’s control panel, hold down **F1** key, (**C180 UP Arrow** above Auto Focus) and turn the machine on. If your screen does NOT show USB PRINT SUPPORT you **MUST** upgrade the Bios prior to discontenting from the 32 bit system. In addition you must also upgrade your firmware. As both the Bios and firmware load in the same way, do them both at the same time. The firmware is located under the page in **Support** for your model’s name. The Bios for all Spirit Series, C180 and Mercury II and III models in located under **Software and Utilities** in the **Support** Section of www.LaserProNA.com. **READ THE INSTRUCTION THAT COME WITH THE BIOS. LOADING THE INCORRECT BIOS FILE WILL DESTROY THE MAIN BOARD.** It is easy to do correctly and takes not reading the simple instruction to do incorrectly with disastrous results.*