



www.LaserProNA.com
LaserPro Dealers of North America

Installing a Spirit Series Mercury II or Mercury III Print Driver on a *64 Bit OS* connected by the USB connection.

(Same instruction may also be used on all 32 Bit OS as well.)



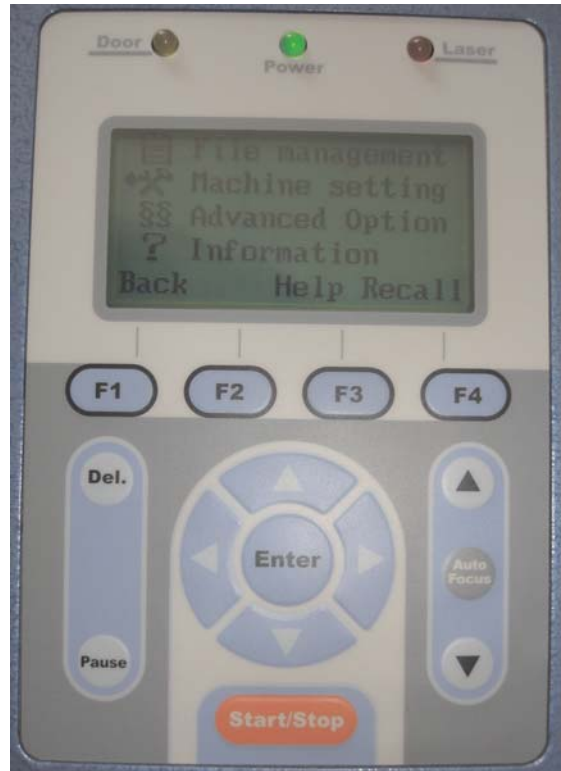
Do NOT install the GCC USBsetup program on a 64 BIT OS.

To connect a Spirt Series on a Windows 64 Bit OS computer follow the steps below.

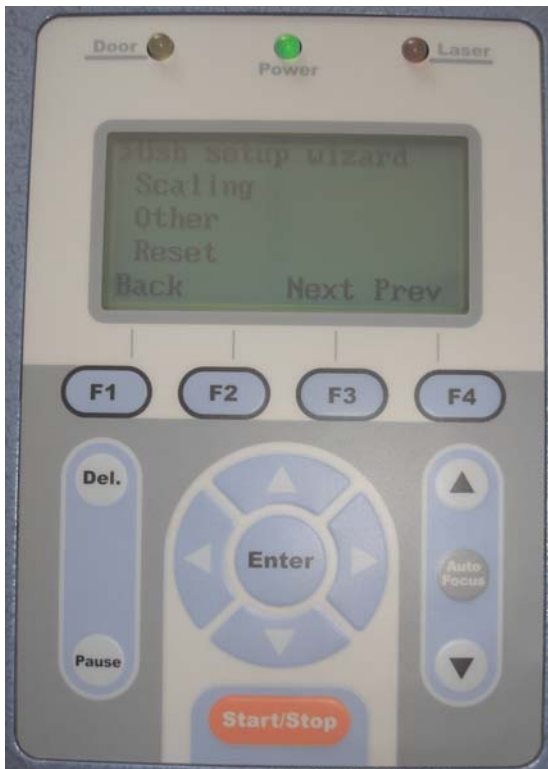
With the USB cable **disconnected** from the computer turn on the Laser.



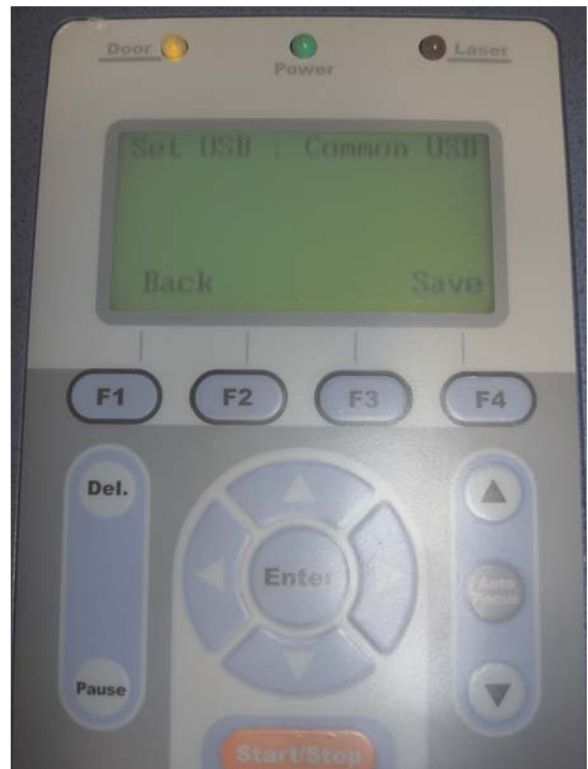
Press **F4** to enter **Function Menu**



Press **Down Arrow** to **Machine settings** and press **Enter**.

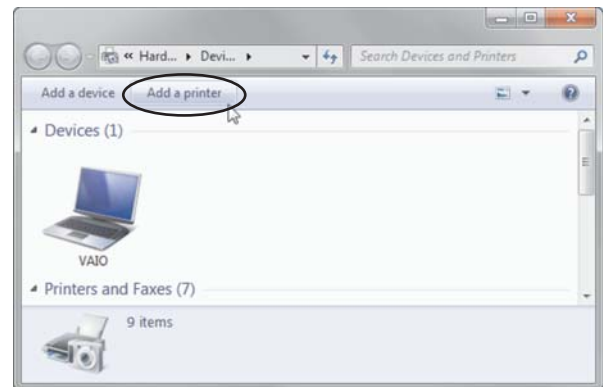
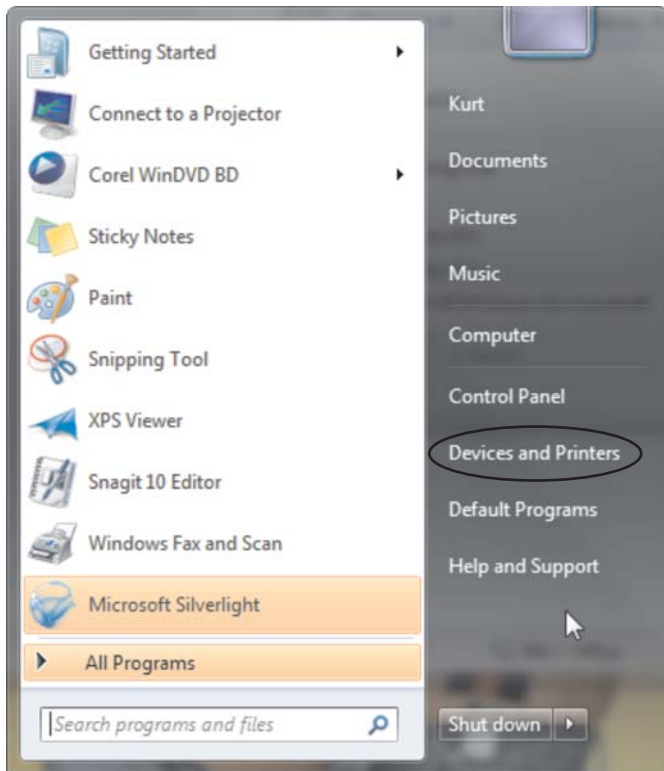


Press **Up Arrow** until you reach **usb Setup Wizard** and press **Enter**.



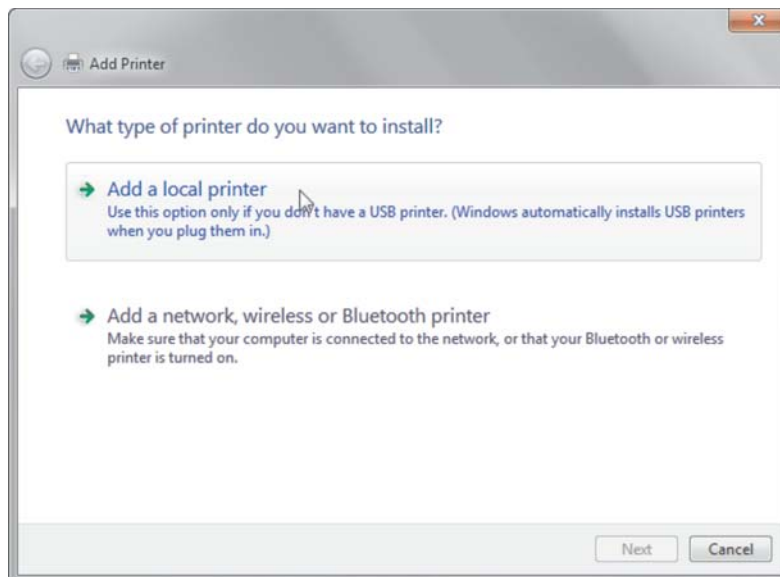
The Default setting is Common. If GCC USB press the **Right Arrow** to change to Common and **F4** Save. (Old firmware will say Vista)

From your computer

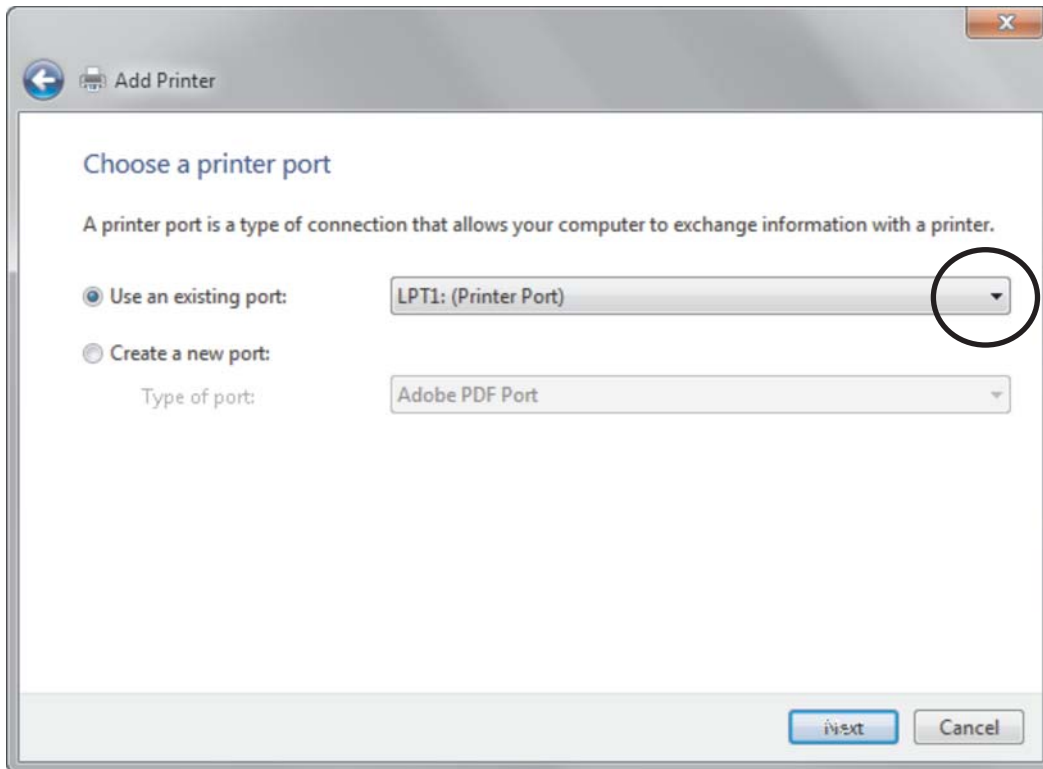


Select **Add a Printer**

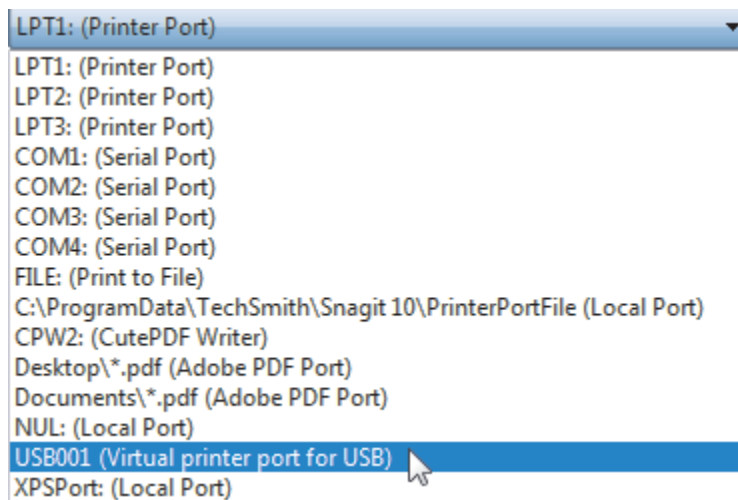
Click on the Start Button on the lower left of the screen, and select Devices and Printers.



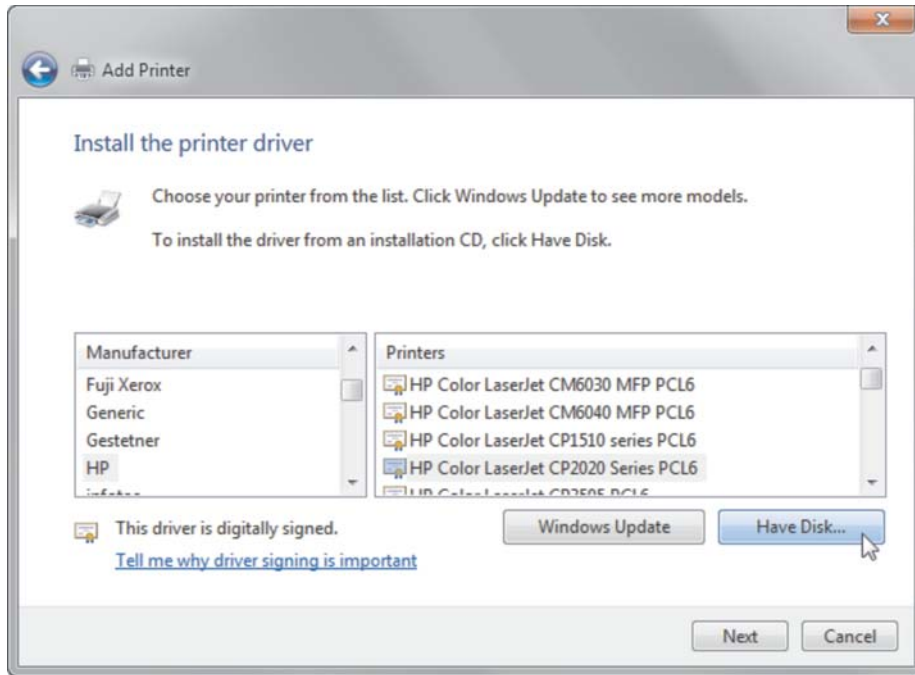
Select **Add a Local Printer** and press **Next**.



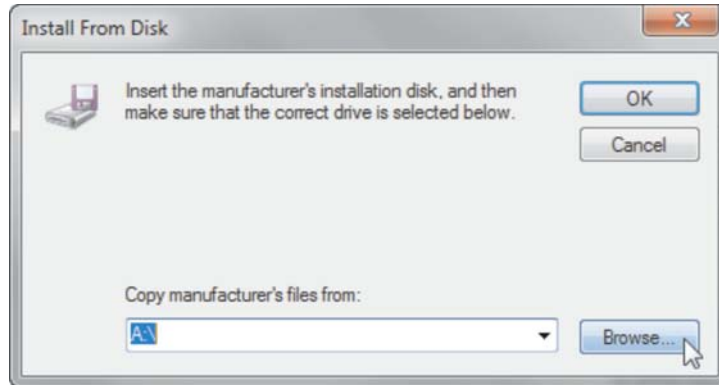
Click on the arrow shown above.



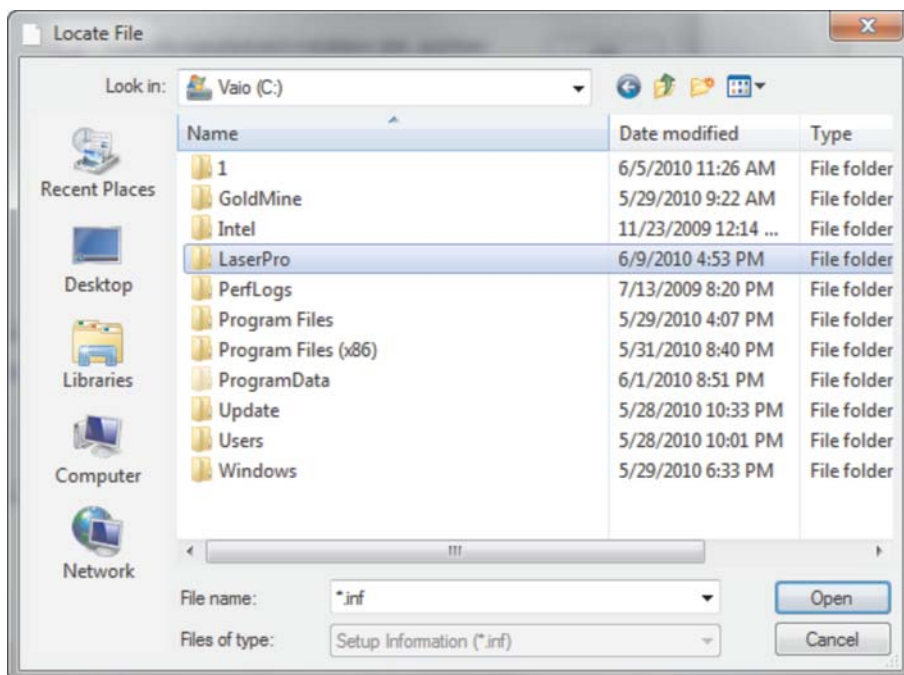
Select the **USB001** Port as shown above. If you have more then one **Virtual printer port for USB** select the last one numerically (typically).
Select **Next**.



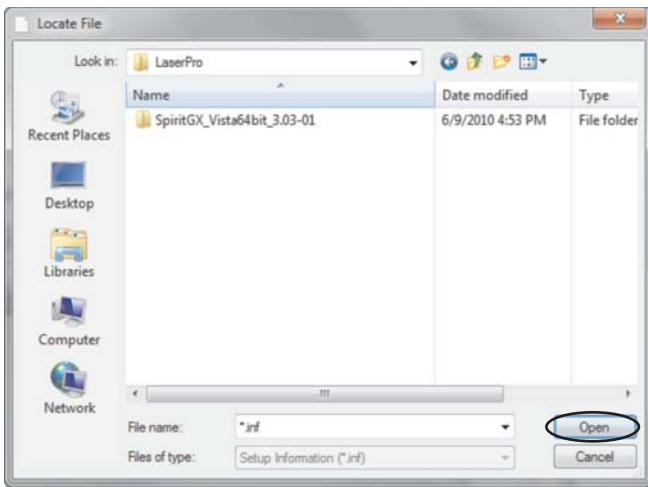
Choose **Have Disk**.



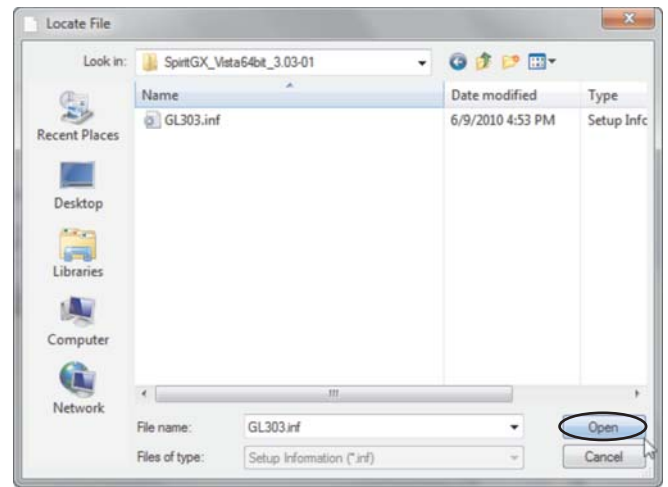
Choose **Browse**



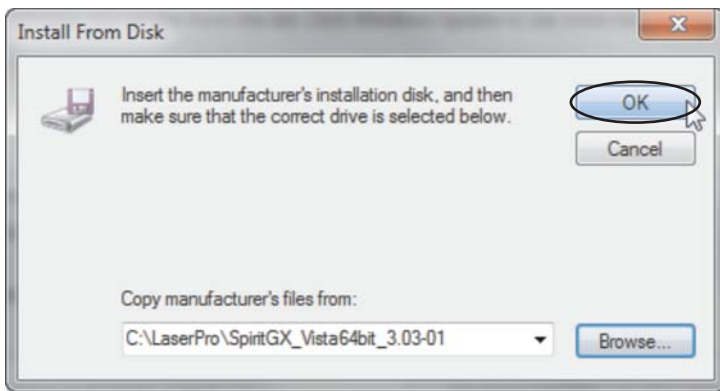
Locate the folder that your 64 Bit Print Driver is located.



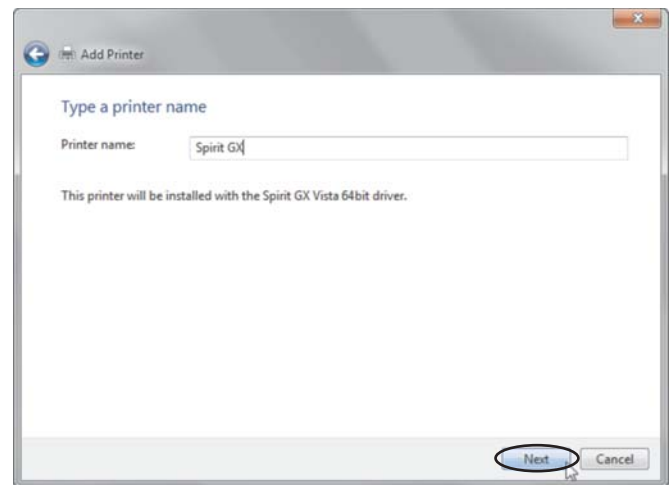
In this example I extracted the current driver to a folder on my C drive called **LaserPro**. Your location may be different.



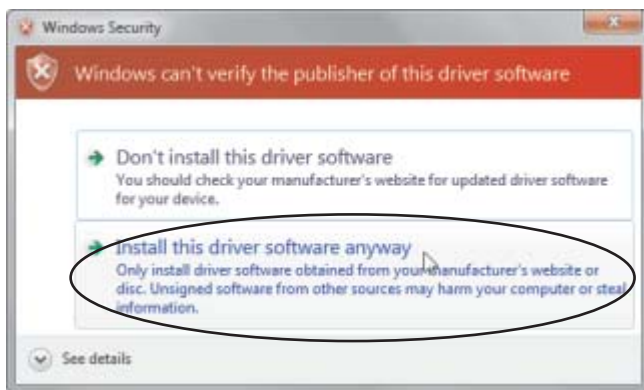
Double click the folder to locate the inf file. Once the folder is opened correctly the appropriate inf file will be displayed in the **File name:** field. Select **Open**



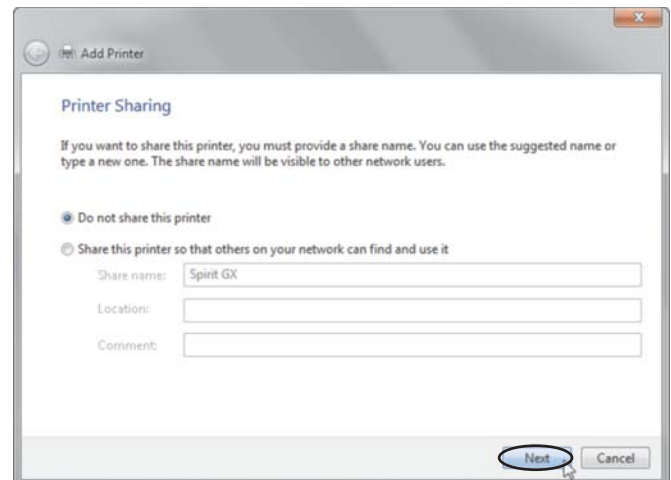
When you see this screen select **OK**.



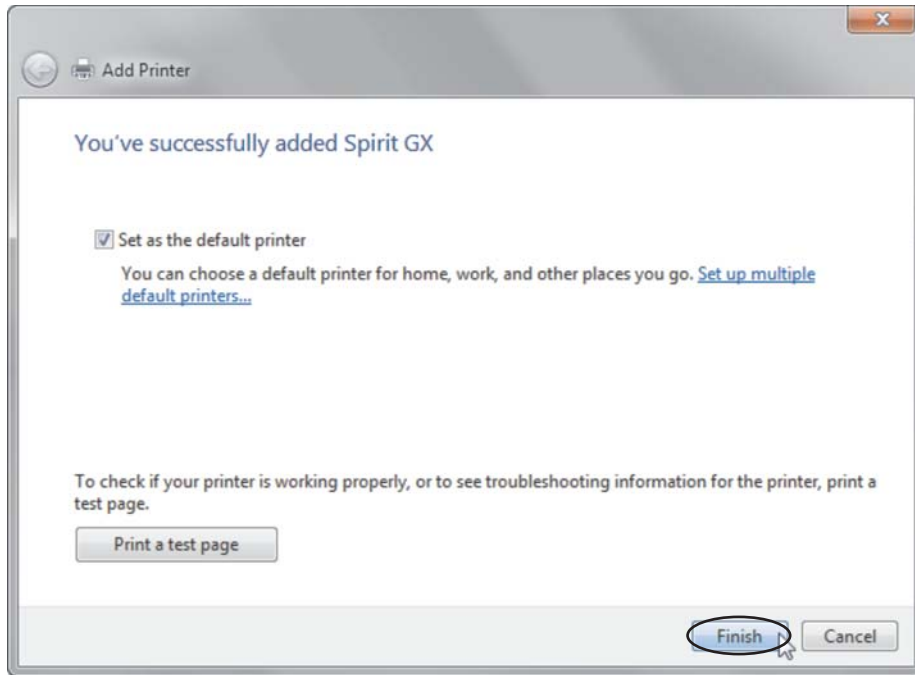
When you see this screen select **Next**.



Select **Install this driver software anyway**



Choose rather to share with other 64 Bit PCs on the network or not. I choose not to. Select **Next**.

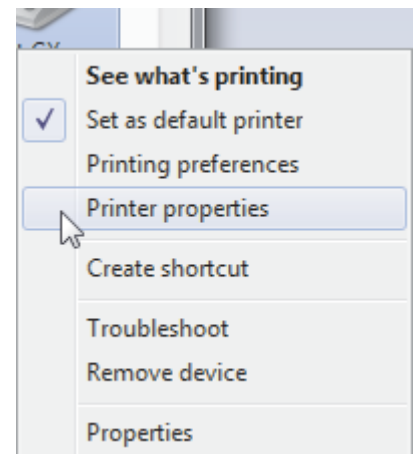
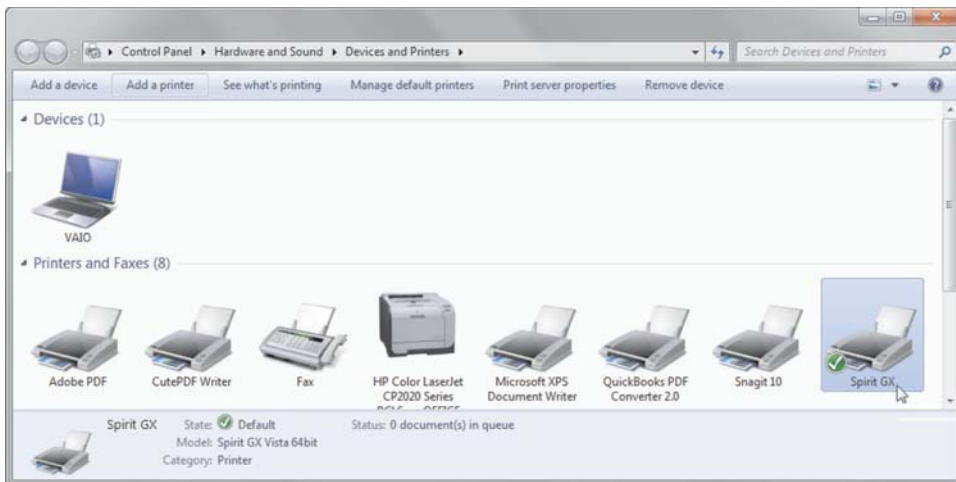


I suggest you set the unit as the default printer and select **Finish**.

If everything worked correctly you should be finished and be able to print to your equipment.

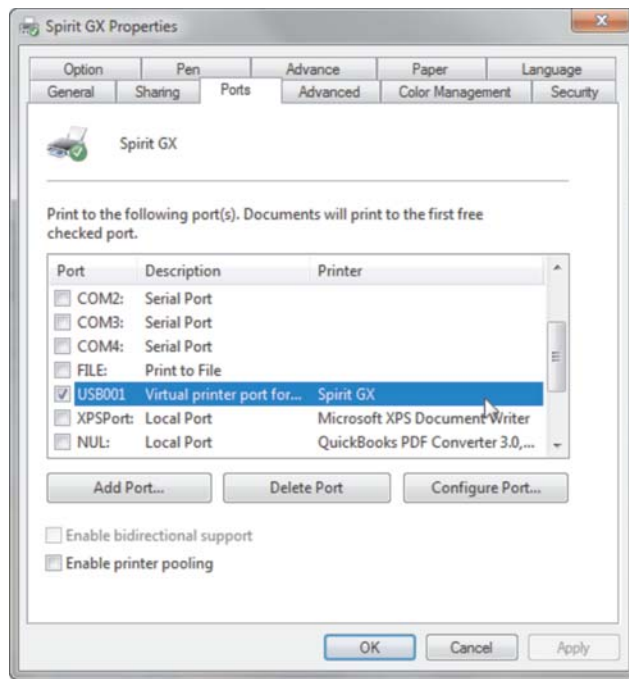
If during normal use, after turning the laser on the computer does not “see” the device unplug the USB cable from either end and reconnect. This should allow Windows to refresh and properly connect. Do this only after the laser has fully initialized.

The following instructions are only required if you selected the incorrect port or you are using a different port now. In addition at the end of this document are instructions on how to unzip the driver if downloaded from LaserProNA and you are not sure how to unzip the compressed file.



Open up **Device and printers** as shown on page 5. **Right click** on the icon for the Spirit Series Laser in this case the **Spirit GX**.

Left Click on **Printer Properties**



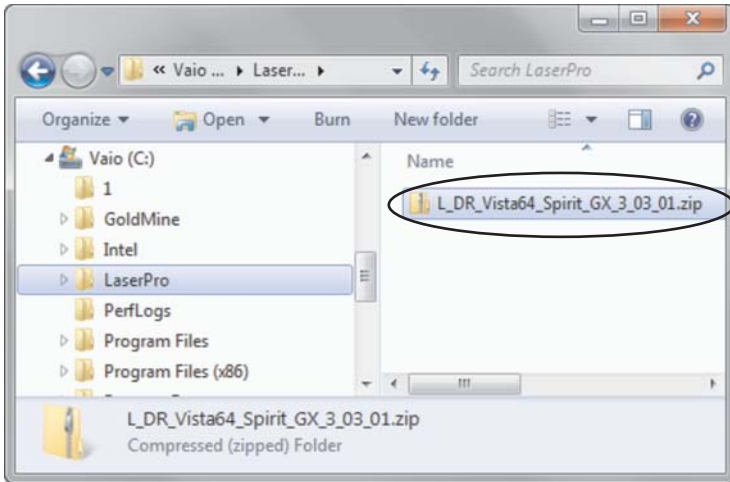
If there is more than one **Virtual printer port** in the list and the file is not printing to the laser select the next (typically unassigned) **USB Virtual printer port**. The simplest way to confirm correct Port selection is to unplug the USB Cable from either end. If configured correctly the LaserPro Printer Icon will go Gray (off line) and Black (on line) when plugged back in. If no change, select the next Port until unplugging the cable has the correct effect. What ever physical port is used needs to always be used. Changing to a different location will cause Windows to assign a new Virtual Printer address and the Driver will have to be reconfigured.

*If you are upgrading from a 32 bit computer to a 64 bit computer and your **laser is made prior to 2013**. You **must** check you to see if you need to upgrade your Main Board Bios prior to moving to a 64 bit OS. On your laser's control panel, hold down **F1** key, (C180 **UP Arrow** above Auto Focus) and turn the machine on. If your screen does NOT show USB PRINT SUPPORT you **MUST** upgrade the Bios prior to discontending from the 32 bit system. In addition you must also upgrade your firmware. As both the Bios and firmware load in the same way, do them both at the same time. The firmware is located under the page in **Support** for your model's name. The Bios for all Spirit Series, C180 and Mercury II and III models in located under **Software and Utilities** in the **Support** Section of www.LaserProNA.com.*

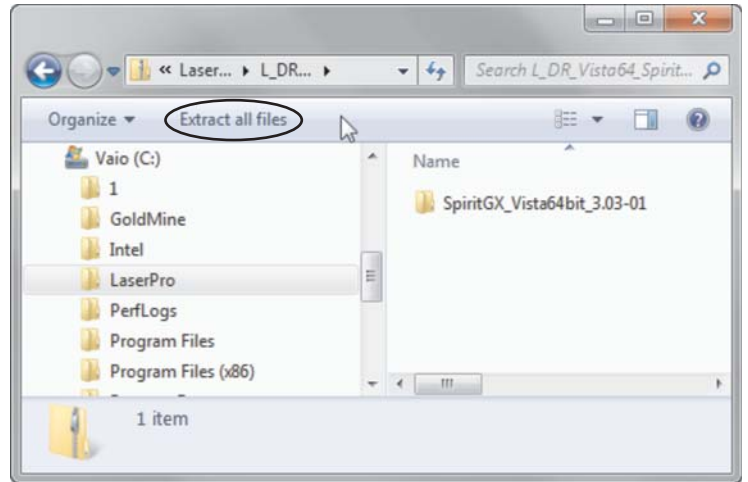
READ THE INSTRUCTION THAT COME WITH THE BIOS. LOADING THE INCORRECT BIOS FILE WILL DESTROY THE MAIN BOARD. It is easy to do correctly and takes not reading the simple instruction to do incorrectly with disastrous results.



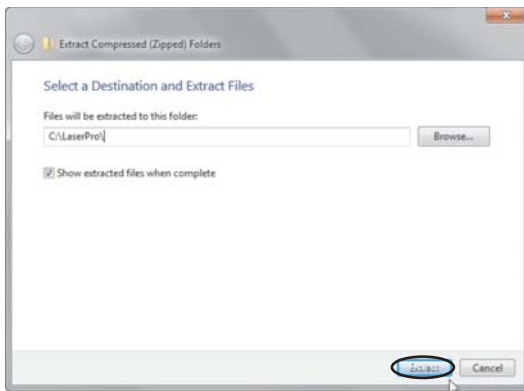
How to unzip a file.



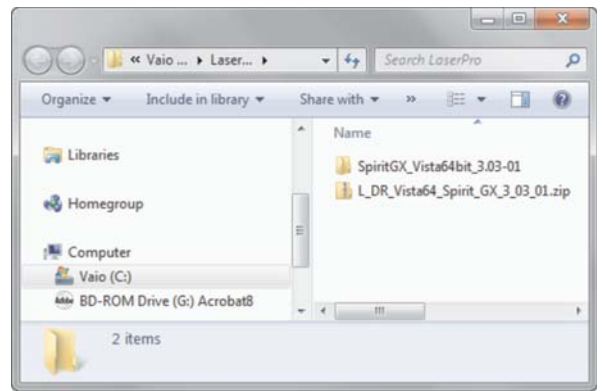
Locate the zip file and **double click** on the file.



Choose **Extract all files**



Choose a destination folder, in this example I am using a folder called LaserPro.
Select **Extract**



It will only take a moment and a new folder will appear in your destination folder. In this case it is the folder Spirit GX_Vista64Bit_3.03-01.

You must use the correct driver for your OS. The **32 Bit** version is for XP, Windows Vista and Windows 7 **32 Bit**. The incorrect version will not install on your PC. In other words you can not install a 64 Bit Driver on a 32 Bit OS and vice versa.