

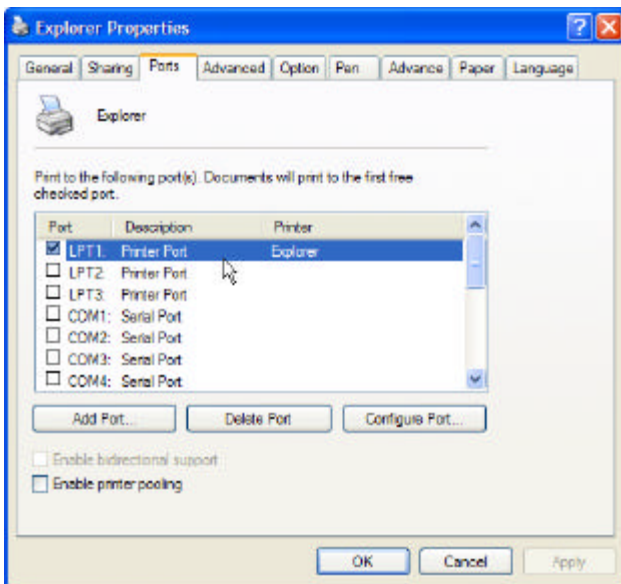
## Updating the LaserPro Print Driver in Windows XP

**Left Click** on **Start** and choose **Printers and Faxes** if not visible select **Control Panel** and then choose **Printers and Faxes**.

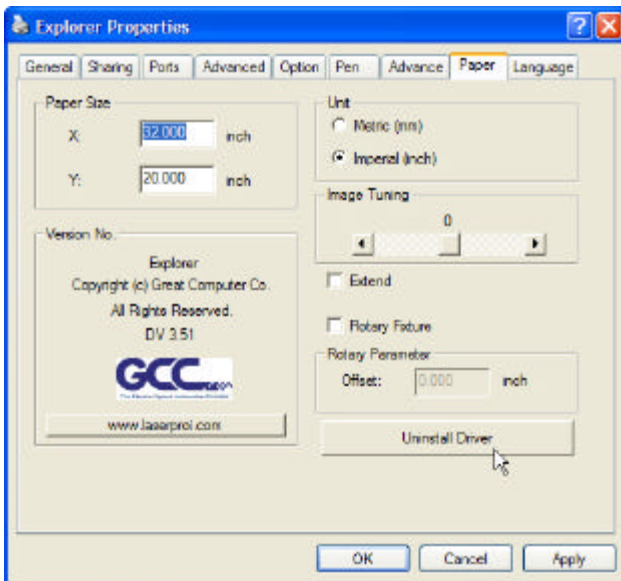
To avoid confusion if your computer does not show an item called **Printers and Faxes**; i.e. if it says “**Printers and Other Hardware**” please click on **Switch to Classic View** on the left of the Control Panel screen.

**Right** click on the current **LaserPro model** icon and choose **Properties**. In this example we are working with an Explorer.

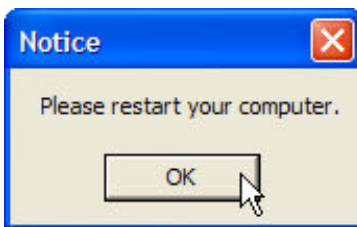
Select the **Ports** tab. Determine which port is connected to your Explorer by looking for the check mark.



Next delete the current Explorer driver. To do so select the **Paper** tab. Click on **Uninstall Driver** in the **Bottom right** as shown in the image below.



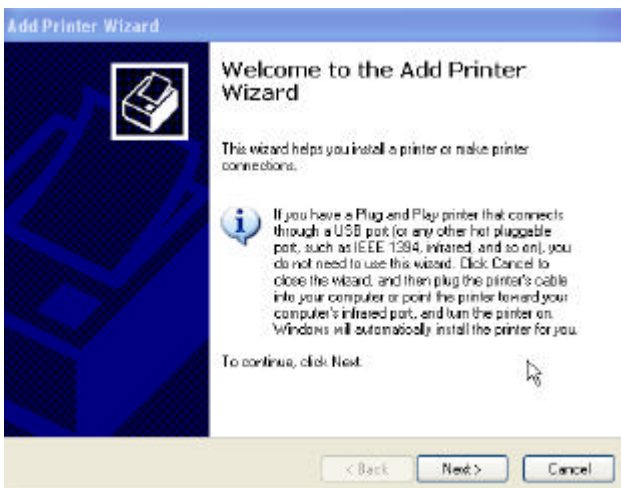
You will then see this screen.

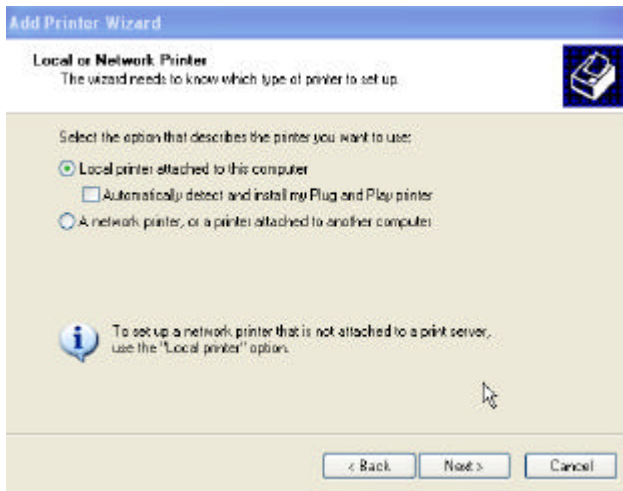


Press OK and reboot your computer.

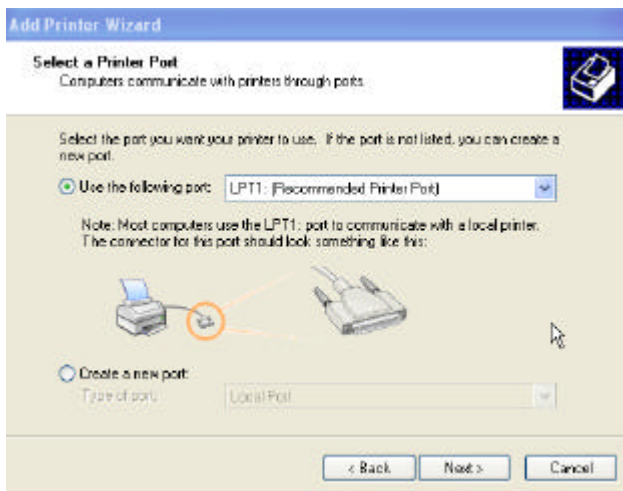
Once your computer has returned to Windows **Left Click** on **Start** and choose **Printers and Faxes** if not visible select **Control Panel** and then choose **Printers and Faxes**.

On the left of the Control Panel Screen choose **Add a printer**.

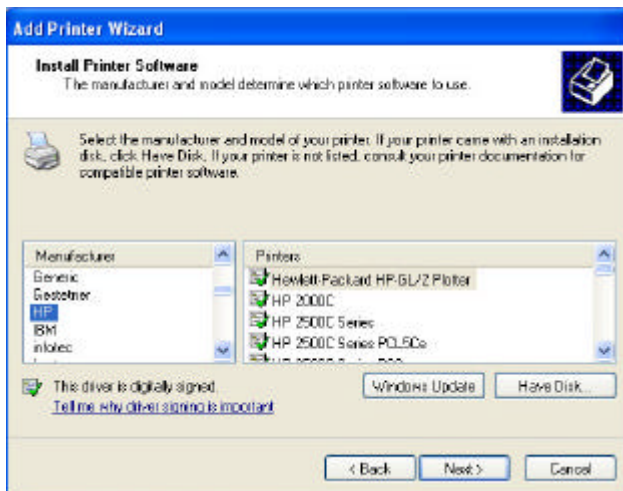




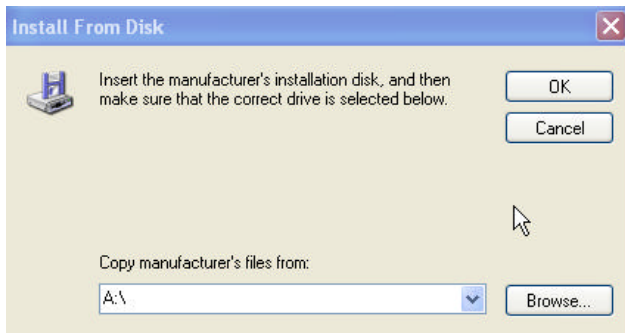
## Choose Next



Change to GCCUSB0 if your laser is connected via USB or to the correct LPT port as previously selected.

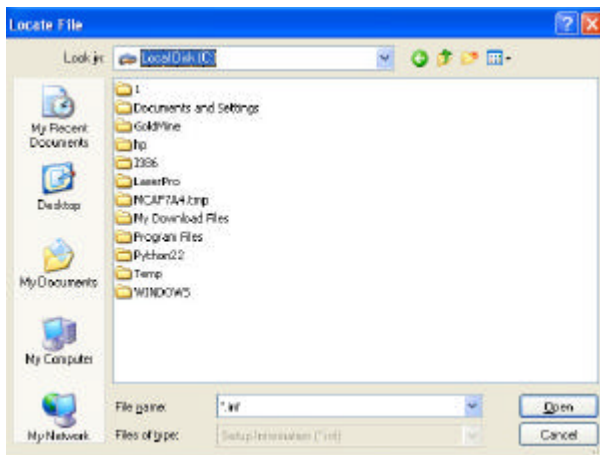


Choose **Have Disk**.



Left click on **Browse**

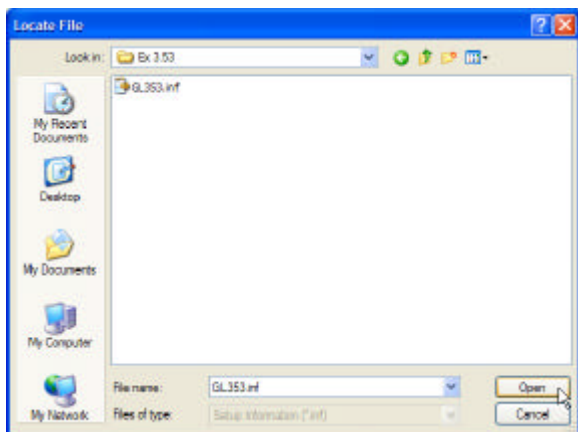
At **Look in** change to Drive **C:**



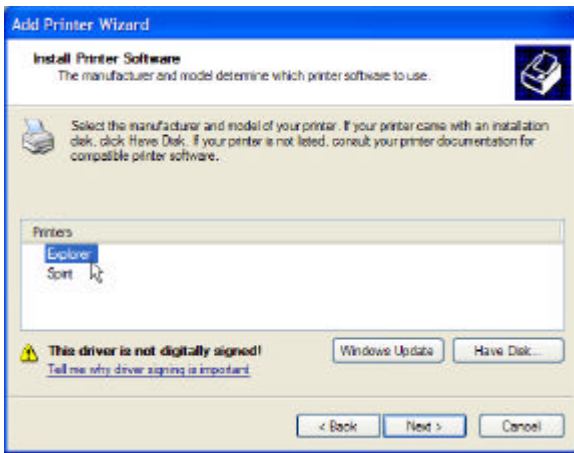
Below double click on the **LaserPro** folder, or whatever folder you have saved the LaserPro driver in. Double click on the **DV353** folder. *This name will be the name of the actual driver being installed. We are using DV353 as our example.*

Double click on the **DV353** folder again.

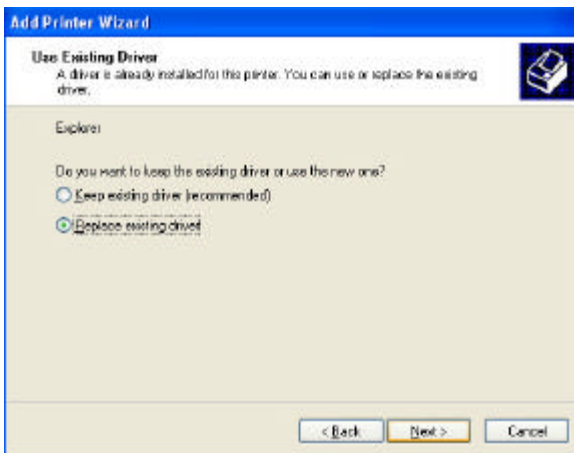
Now you should have a file with an extension of GL353.inf in the **File name** field. *Remember GL353.inf is for this example. Your inf file may vary depending on which model machine you have and which version of the print driver you are installing.*



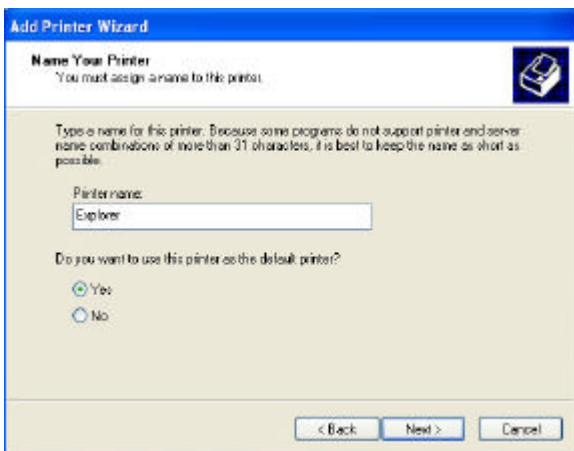
Select **Open**, and in the next screen choose **OK**.



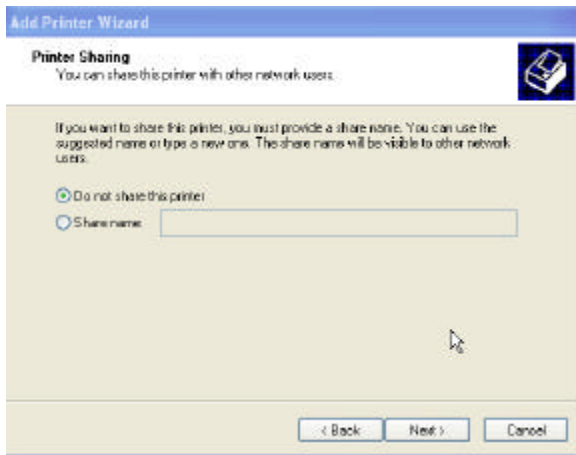
Left click on **Next**.



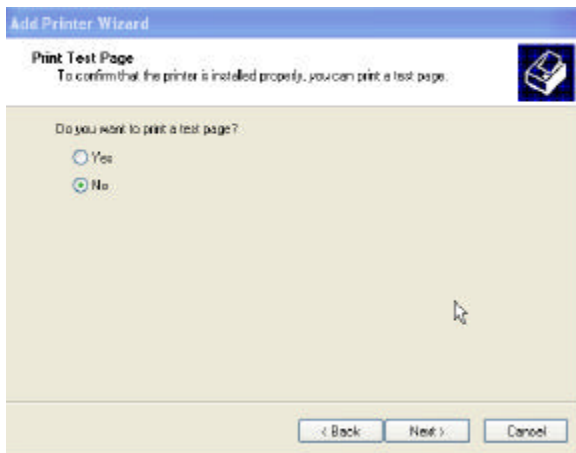
Select **Replace existing driver**, and choose **Next**.



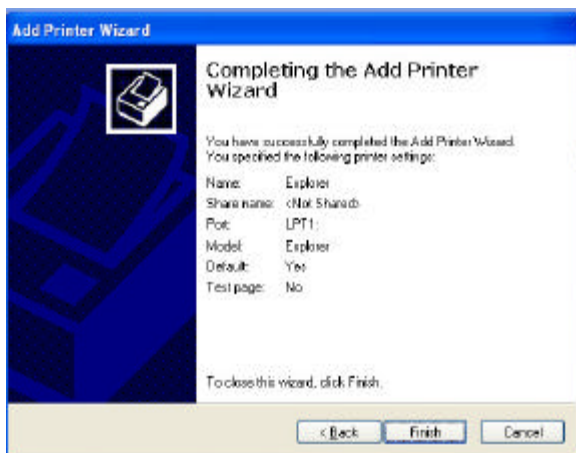
Choose **Yes**, end then select **Next**.



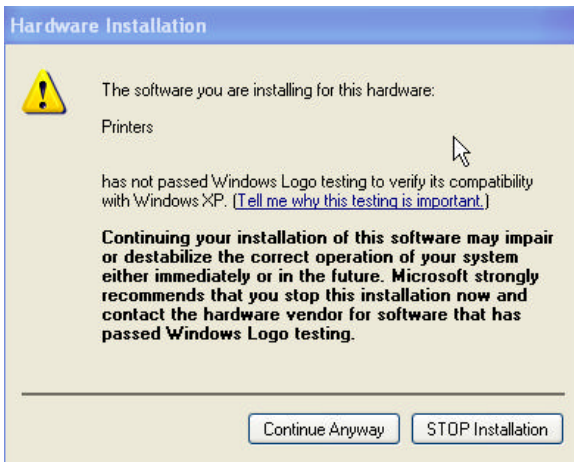
Choose **Next** or select **Share**, and then **Next** if you wish this to be available for network printing.



Choose **No** and select **Next**.



Choose **Finish**.



### Choose **Continue Anyway**

Wait of your computer to finish the install. When it is complete the Finish window will close and the driver is ready.

Your previous history and default settings will still be as before when next you use the new version of the LaserPro driver.